

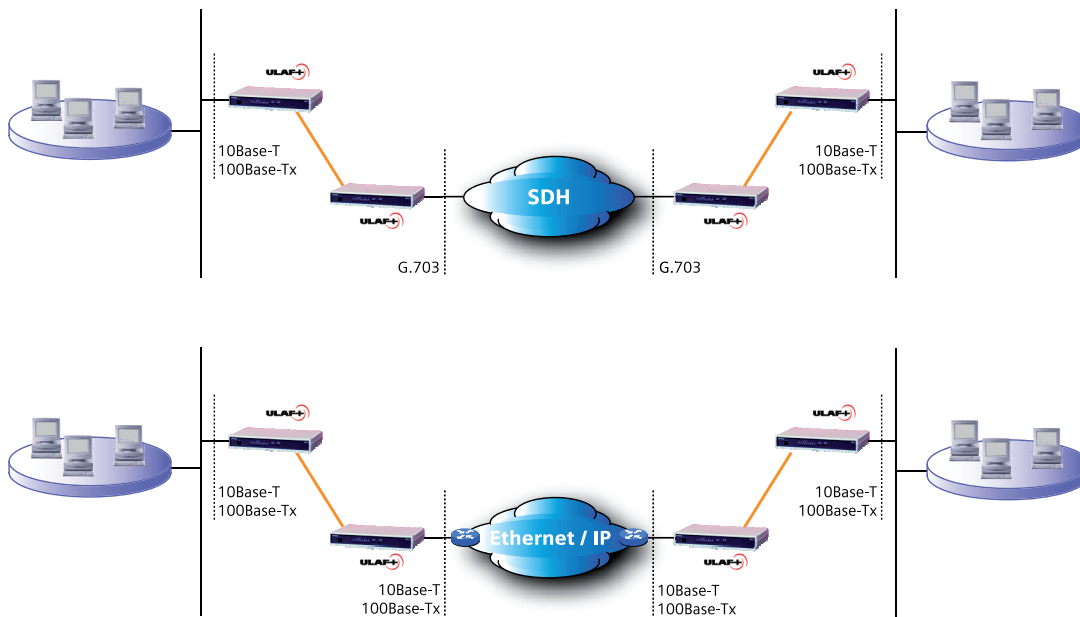
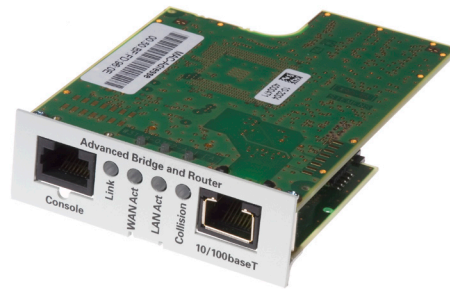
# Advanced Bridge Module Advanced Bridge & Router Module

for ULAF+ access platform



## Product Overview

The data interface modules “Advanced Bridge” and “Advanced Bridge & Router” add powerful Ethernet/IP functionality to ULAF+ termination units. The “Advanced Bridge” features Layer 2 bridging, supporting the spanning tree algorithm and VLAN tagged frames. On the forwarding, routing protocols as well as firewall and DHCP functionality is added.



Point-to-point connection over a leased line network allows data rates up to 2 Mbit/s. Point-to-point connections with ULAF+ over UTP or fibre are also possible: in these cases, connecting two STU2 termination units even allows for data rates up to 4 Mbit/s. As counterparts for «Advanced Bridge & Router» modules on the far end of the leased line network, other router products (e.g. CISCO routers) can be used. However, those routers must support the PPP or FrameRelay protocol at the WAN interface.

## Key Features

### «Advanced Bridge»

- Auto-sensing 1-port 10/100BaseT Ethernet LAN interface
- Layer 2 advanced bridging, supporting VLAN-tagged Ethernet frames and spanning tree algorithm
- Local command line-based management interface (RS232, Telnet)
- Security features (e.g. user access privileges, password protection, access control list)

### Additional features «Advanced Bridge & Router»

- Layer 3 packet forwarding, supporting routing protocols (e.g. RIP Version 1&2)
- CISCO compatibility with Frame-Relay encapsulation at WAN interface
- Firewall functionality (e.g. NAT, IP packet filtering rules, stateful packet inspection and more)
- DHCP client & server
- Remote command line-based and web-based management interfaces (Telnet, SNMP & HTTP)