

AccessIntegrator Element Manager

for ULAF+ access platform

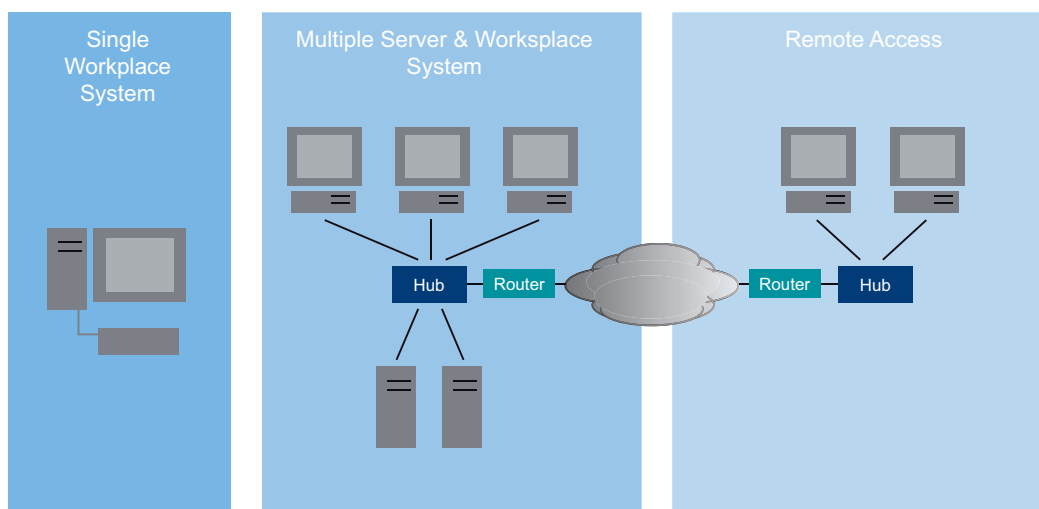


A flexible and scalable architecture

AccessIntegrator is the Albis Technologies solution for comprehensive access network management. AccessIntegrator is designed on a flexible and scalable architecture based on ITU-T M.3010, ITU-T M.3020 and ITU-T M.3400. It allows the customer to compose a Network Management Solution satisfying his needs perfectly. Several Element Managers are available (FastLink, XpressLink, MSAP, IAD etc.). They can be operated stand-alone or simultaneously on the same server. Cross Domain Manager and Network Manager merge these Element Managers for cross-platform and end-to-end management.

The Element Manager ULAF+ is a software using the Acl framework. Therefore it offers the same look and feel of other Element Managers in the Acl. Customers who are familiar with AccessIntegrator will be able to operate the software with minimal training effort.

The Acl Element Manager for ULAF+ can be used as a stand alone application. It has interfaces (e.g. CORBA, SNMP) for integration into the Cross Domain and Network Managers or 3rd party NMS.



Client-Server Architecture

The Acl Element Manager ULAF+ is implemented as a client-server software that allows for the distribution of AccessIntegrator workplaces. Multiple users (clients) can work in parallel with one server. For large networks multiple servers are possible. In this way network providers can build up NMS configurations fulfilling their demands perfectly.

Configuration Management

Configuration management is presented with all well-known features from the ULAF+ LCT, within the same dialog windows. It is possible to configure lines by using predefined configuration sets or configure your own parameters.

Fault Management

Alarm lists on global, NE (subrack) and cards (line) levels are available. They provide detailed information about alarm status in the network. Various filters support alarm administration.

Performance Management

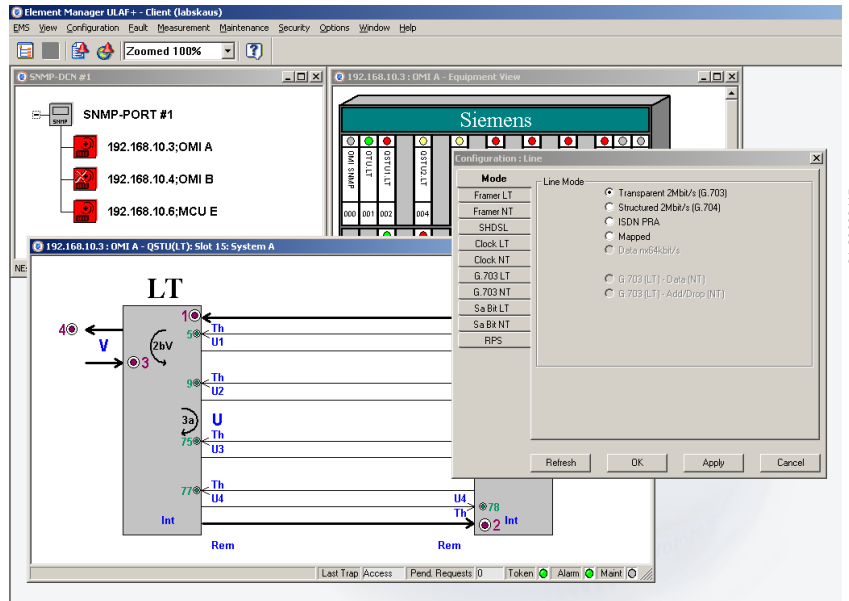
Performance data according ITU-T G.821 and G.826 are stored for service quality monitoring. File export functions can be used to generate statistics with external tools (e.g. Excel).

Security Management

Different user profiles with password can be generated to protect the Management System against abuse.

Ressource Management

Inventory management generates lists of equipment installed in the network. With the Software Download function, centralized software distribution simplifies network upgrades.



01-20090115

System Requirements

Server

Hardware	≥ 2 GHz CPU ≥ 2 GB RAM ≥ 120 GB HDD
Operating System	Win 2000 Server (incl. SP2) Win 2003 Server Solaris 9

Client

Hardware	≥ 2 GHz CPU ≥ 512 MB RAM ≥ 80GB HDD
Operating System	Win 2000 (incl. SP2) Win 2003 Solaris 9 (On demand)

Albis Technologies Ltd
 Albisriederstrasse 199
 CH-8047 Zürich
 Phone +41 58 252 4777
 Fax +41 58 252 4778
 www.albistechnologies.com